

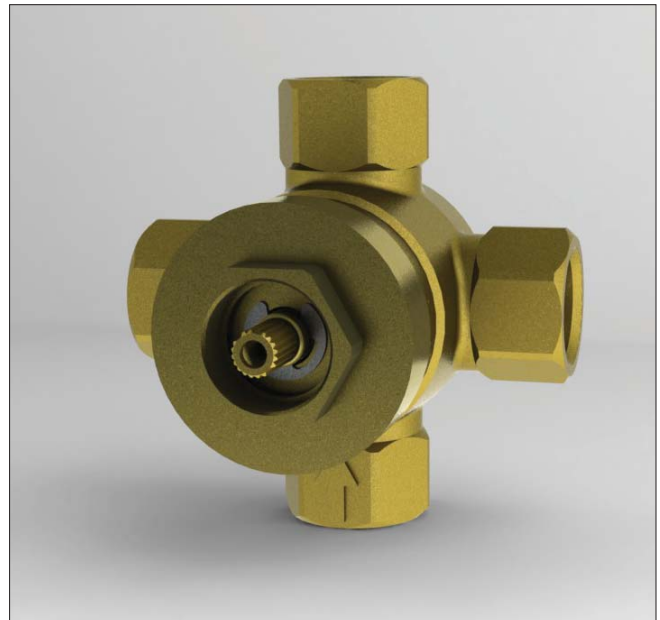
## Three-Way Diverter Valve with Off

### FEATURES

- Corrosion resistant solid brass body
- 1/2" NPT connections
- Ceramic disk valve cartridge
- 3 independent outlets
- **3 positive shut-off positions**

### CODES/STANDARDS

- Meets or exceeds ASME A112.18.1/CSA B125.1
- Certifications: IAPMO(cUPC), State of Massachusetts and others
- Code Compliance: UPC, IPC, NSPC, NPC Canada, and others



### PRODUCT SPECIFICATION

The three-way diverter valve with off shall have 1/2" NPT connections. Product shall have ceramic disk valve cartridge. Product shall have 3 independent outlets. **Product shall have 3 positive shut-off positions.** Product shall be TOTO Model TSMX. Required three-way diverter trim with off sold separately.

### SPECIFICATIONS

- Warranty: Lifetime Limited Warranty (Residential Use)  
One Year (Commercial Use)
- Material: Brass
- Shipping Weight: 1.8 lbs.
- Shipping Dimensions: 6" L x 3-3/8" W x 3" W

### INSTALLATION NOTES

**TRIM REQUIRED:**  
Three-way diverter trim with off sold separately.

