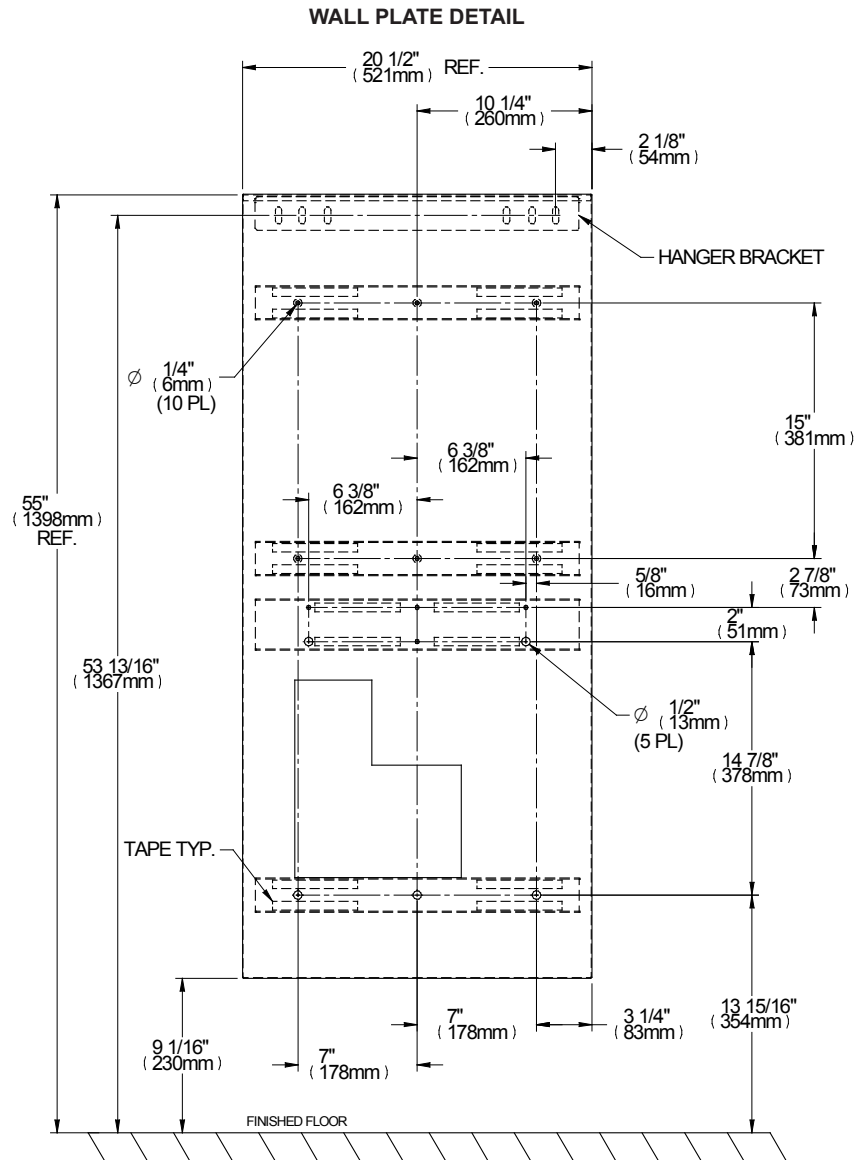
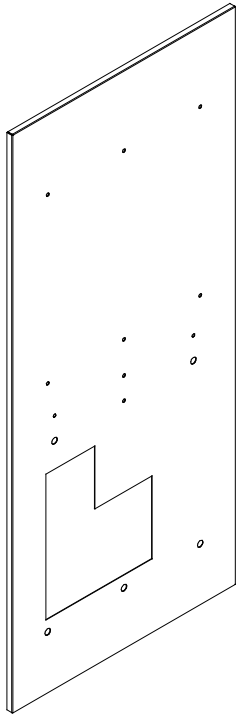


# INSTALLATION INSTRUCTIONS

## 1000004833 - Wall Plate w/Bottle Filler

Wall plate kit 1000004833 is designed for use with EZS8WS and LZS8WS style models.



REFER TO SPECIFIC  
COOLER SPEC SHEET FOR  
ROUGH-IN INSTRUCTIONS.

### Installation steps:

- Locate and mark holes for the wall plate and hanger bracket per Fig 1.
- Make sure wall plate cutouts match wall openings. Drill holes.
- Fasten hanger bracket panel to wall.
- Place wall plate assembly onto hanger bracket and align holes.
- Attach water cooler and bottle filler to wall plate.