

**Central Brass Company, Inc.**  
3325 S. Garfield Ave.  
Commerce, CA 90040  
(800) 321-8630  
www.centralbrass.com

**Tools:**



Adjustable Wrench



Plumbers Putty



Teflon Tape



Rags



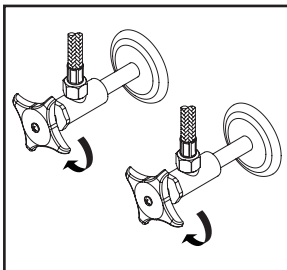
**Model Number: 1172, 1173 Series**

**Warnings and Notes:**

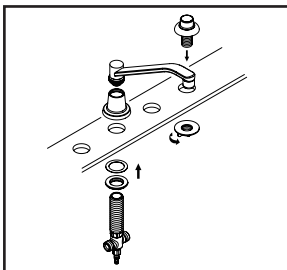
Check with local plumbing code requirements before installation.  
This product should be installed by a local listed plumber.  
**Do not use plumbers putty on threads.**

**Installation Steps:**

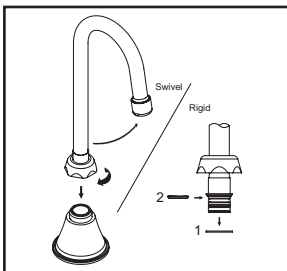
Two Handle Kitchen Faucet



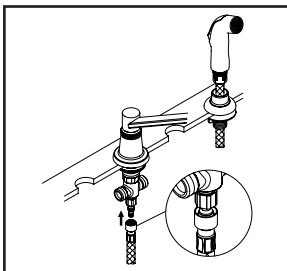
(1) Shut off the water supply. Remove old faucet. Clean mounting surface in preparation for new faucet.



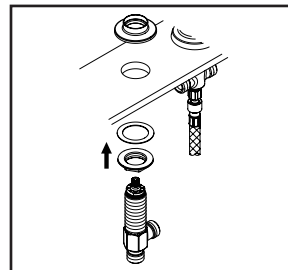
(2) Thread locknut with gasket onto center tee and insert center tee through mounting hole from underneath the sink, while holding the center tee, thread spout escutcheon from top of center tee, adjust the center tee's height to install spout by tightening spout nut to center tee, tighten the locknut from underneath the sink with the help of a wrench and go to step (4). For 1173 series, place side spray holder on mounting hole. Tighten locknut from underneath the sink to secure the side spray holder.



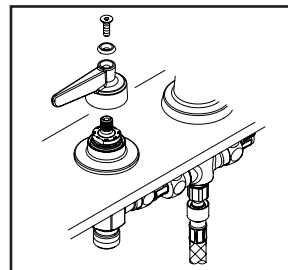
(3) For spout model number CS-22002, CS-22003, utilize friction brass washer to make spout rigid by removing Nylon gasket and replacing with friction brass washer, tighten retainer nut to the faucet body with wrench.



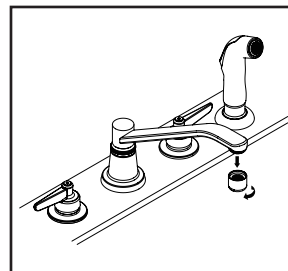
(4) Guide the side spray hose through the side spray holder. Insert the side spray hose quick connect adapter into faucet outlet end, push until a "click" is heard. Pull side spray hose downward to test engagement.



(5) Thread locknut with gasket onto corner valve, insert corner valve through mounting hole from underneath the sink, while holding the corner valve, thread handle escutcheon from the top of the corner valve, adjust corner valve's height then tighten locknut from underneath with the help of a wrench. Repeat the same procedure to install the other corner valve.



(6) Connect both corner valves outlet to center tee with supplied flex hose. Install handle to corner valve by tightening handle screw. Connect water supply lines to both inlet of corner valve.



(7) Important: After installation is complete, remove the aerator. Turn on the water and allow both hot and cold water to run for at least one minute each. While water is running, check for leaks. Turn off the water and replace the aerator when finished.