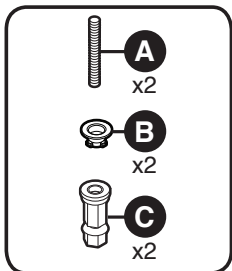


Tools Needed

Herramientas requeridas

Outils requis

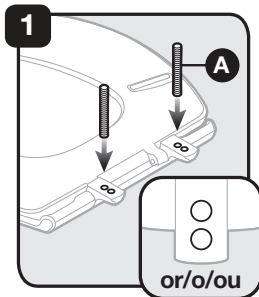


Hardware Kit Includes

El kit de instalación incluye

Le kit de matériel inclut

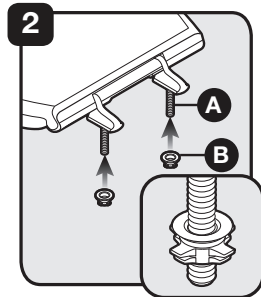
! IMPORTANT Installation Instructions
! IMPORTANTE Instrucciones de Instalación
! IMPORTANT Instructions d'installation



1 Thread (A) into hinges.

Inserte (A) en bisagras.

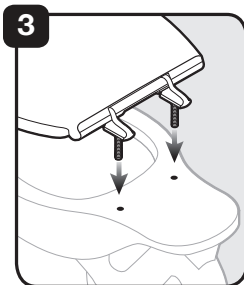
Visser (A) dans les charnières.



2 Twist or slide (B) onto (A) all the way up.

Gire o deslice (B) en (A) completamente hacia arriba.

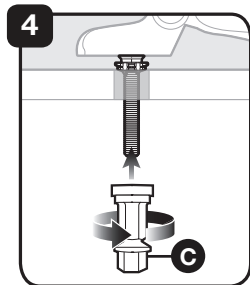
Torsader ou glisser (B) sur (A) à fond.



3 Place seat on bowl, change positions of (A) for preferred fit.

Coloque el asiento en las posiciones de cambio de la taza de (A) para un ajuste preferido.

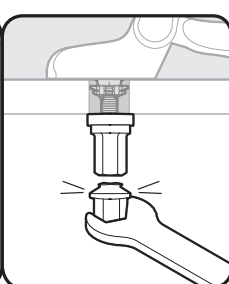
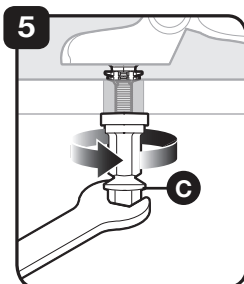
Placer le siège sur la cuvette, changer les positions de (A) pour l'ajustement préféré.



4 Finger tighten (C) to the under side of the bowl.

Aprieta con los dedos (C) en el lado inferior de la taza.

Serrer à la main (C) au-dessous de la cuvette.



5 Tighten (C) until lower portions snap off.

Apretar (C) hasta que las partes inferiores se desprendan.

Serrer (C) jusqu'à ce que les portions inférieures cassent.



888.722.6488

corp@BemisMfg.com

ToiletSeats.com



Do not stand on cover

No se pare en la tapa

Ne pas se mettre debout sur le siège